



US Army Corps of Engineers
BUILDING STRONG®

Hurricane Ida Advisory #14

For Planning Purposes Only!

WASHINGTON, DC
11:57:40
29 Aug 2021

CHICAGO
10:57:40
29 Aug 2021

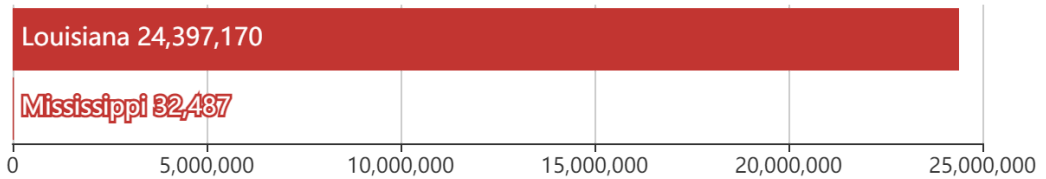
LOS ANGELES
08:57:40
29 Aug 2021

<https://go.usa.gov/xFSNr>

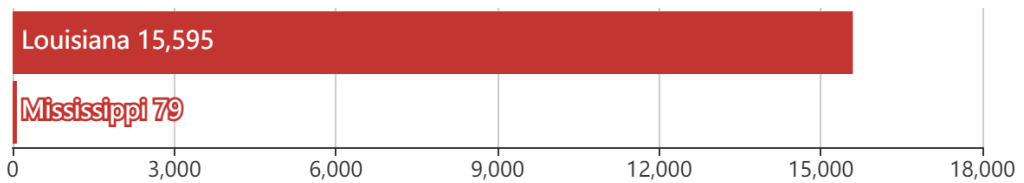
Updated as of 29 Aug 2021 (10:57 AM Central Daylight Time)

Debris

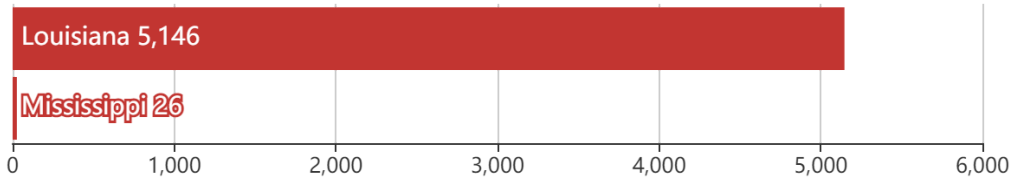
24.4M
cu. yd.



Est. Temp. Roofing
15.7K
units

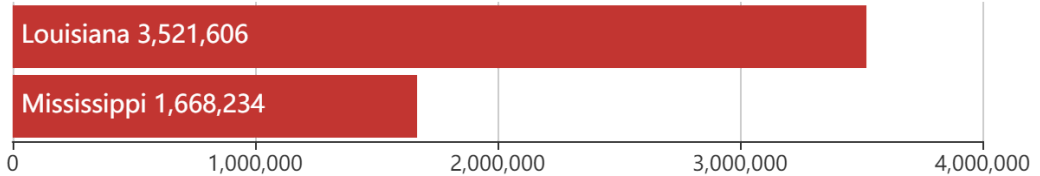


Act. Temp. Roofing
5.2K
units



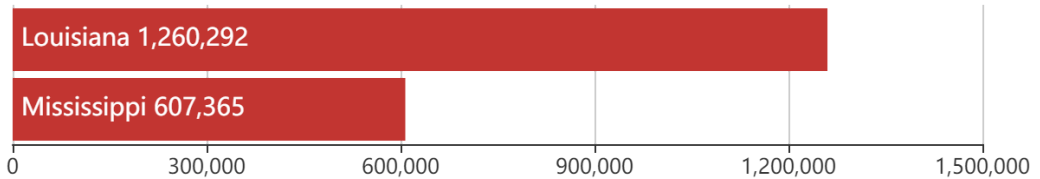
Population

5.2M
people



Households

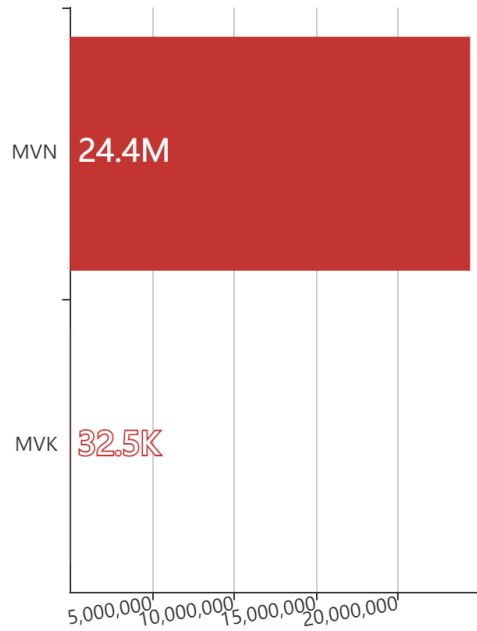
1.9M
households



Mission Model Summary

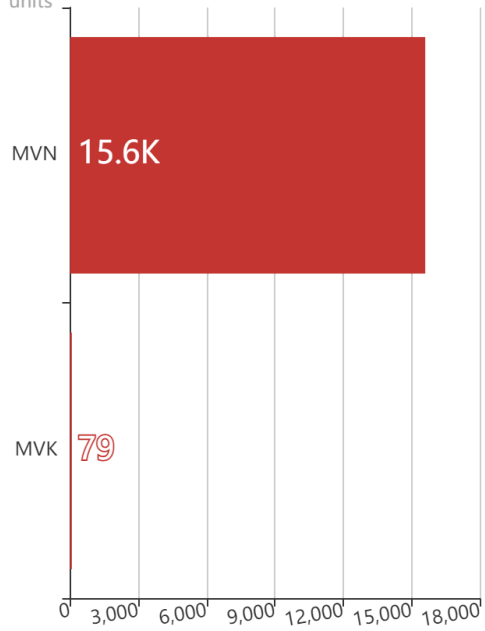
Debris By USACE District

cu. yd.

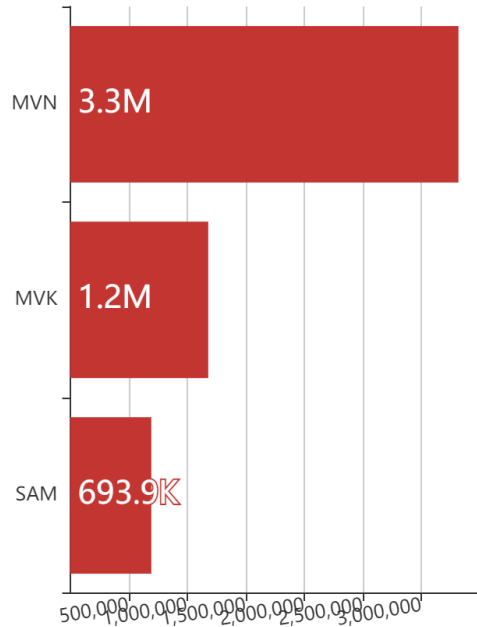


Est. Temp. Roofing By USACE District

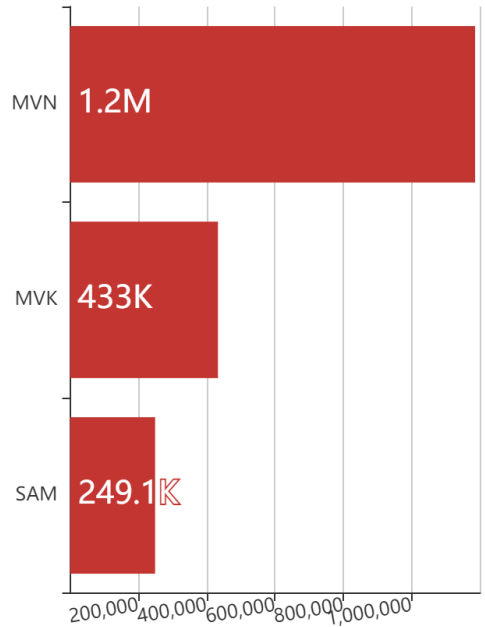
units



Population By USACE District



Households By USACE District



Critical Infrastructure Summary

Total

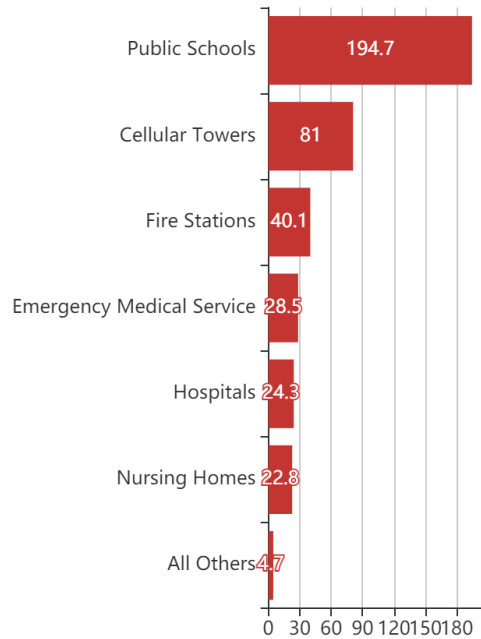


Power Requirements



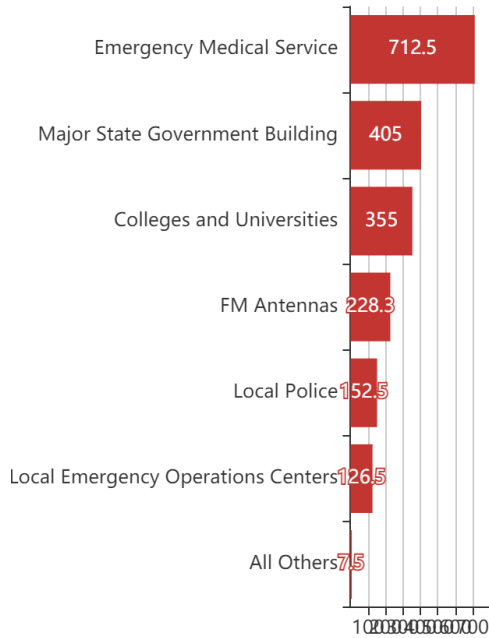
Generators

By Generator Count



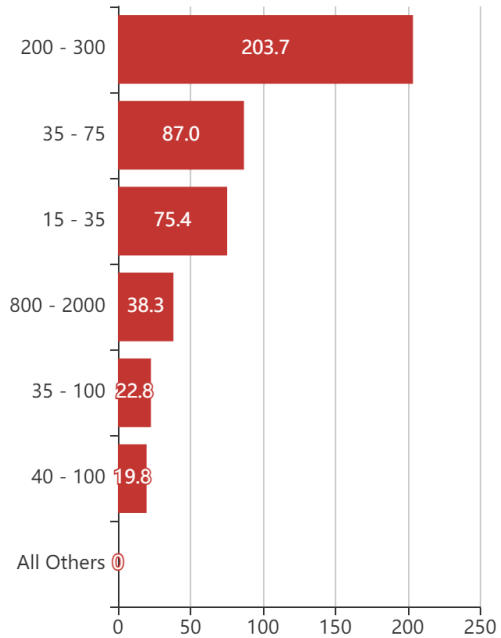
Generators

By Power Requirement



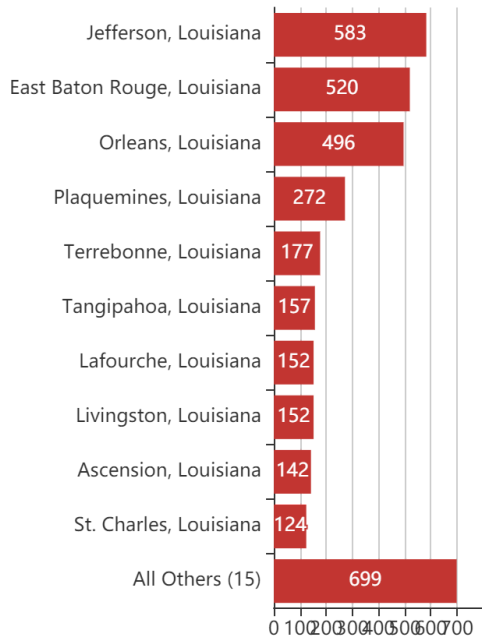
Generators

By Range



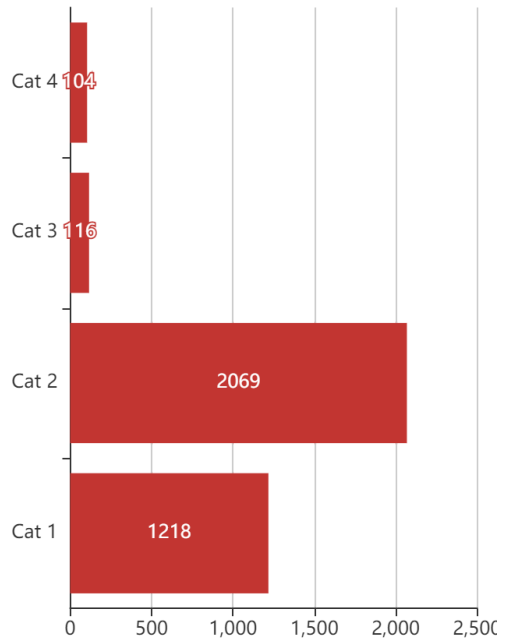
Structures

By County



Structures

By Intensity

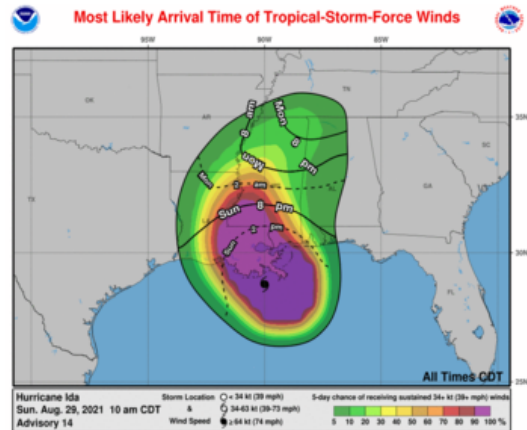
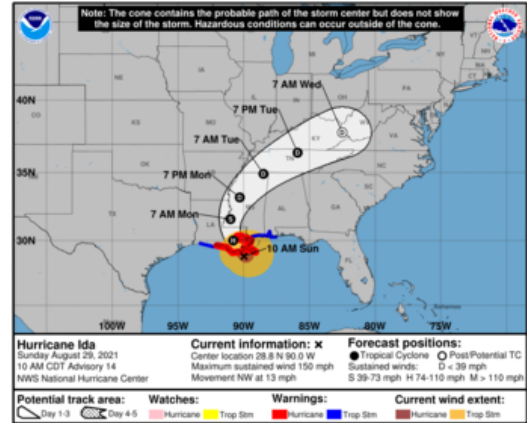




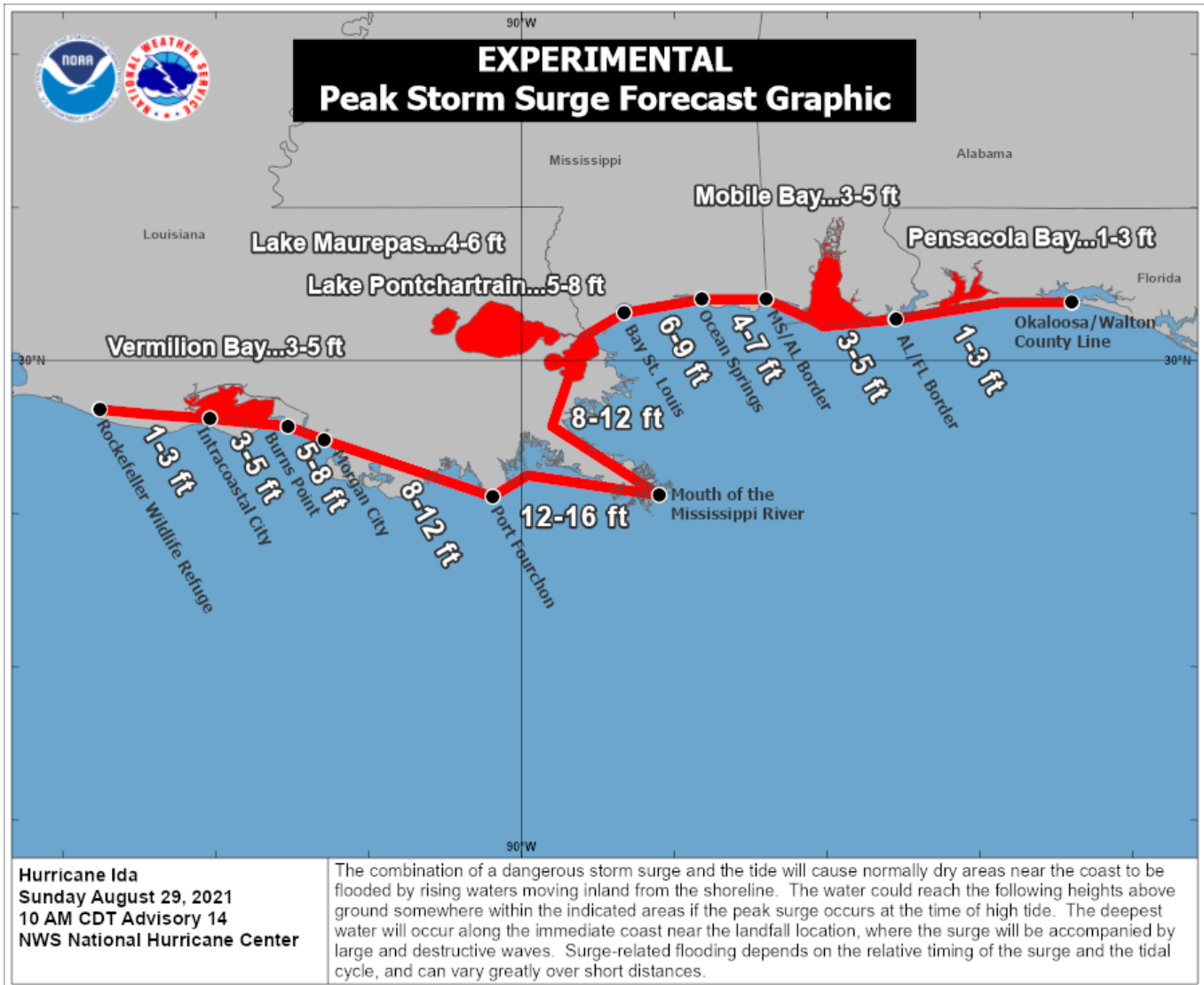
Key Messages for Hurricane Ida

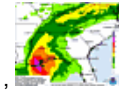
Advisory 14: 10:00 AM CDT Sun Aug 29, 2021

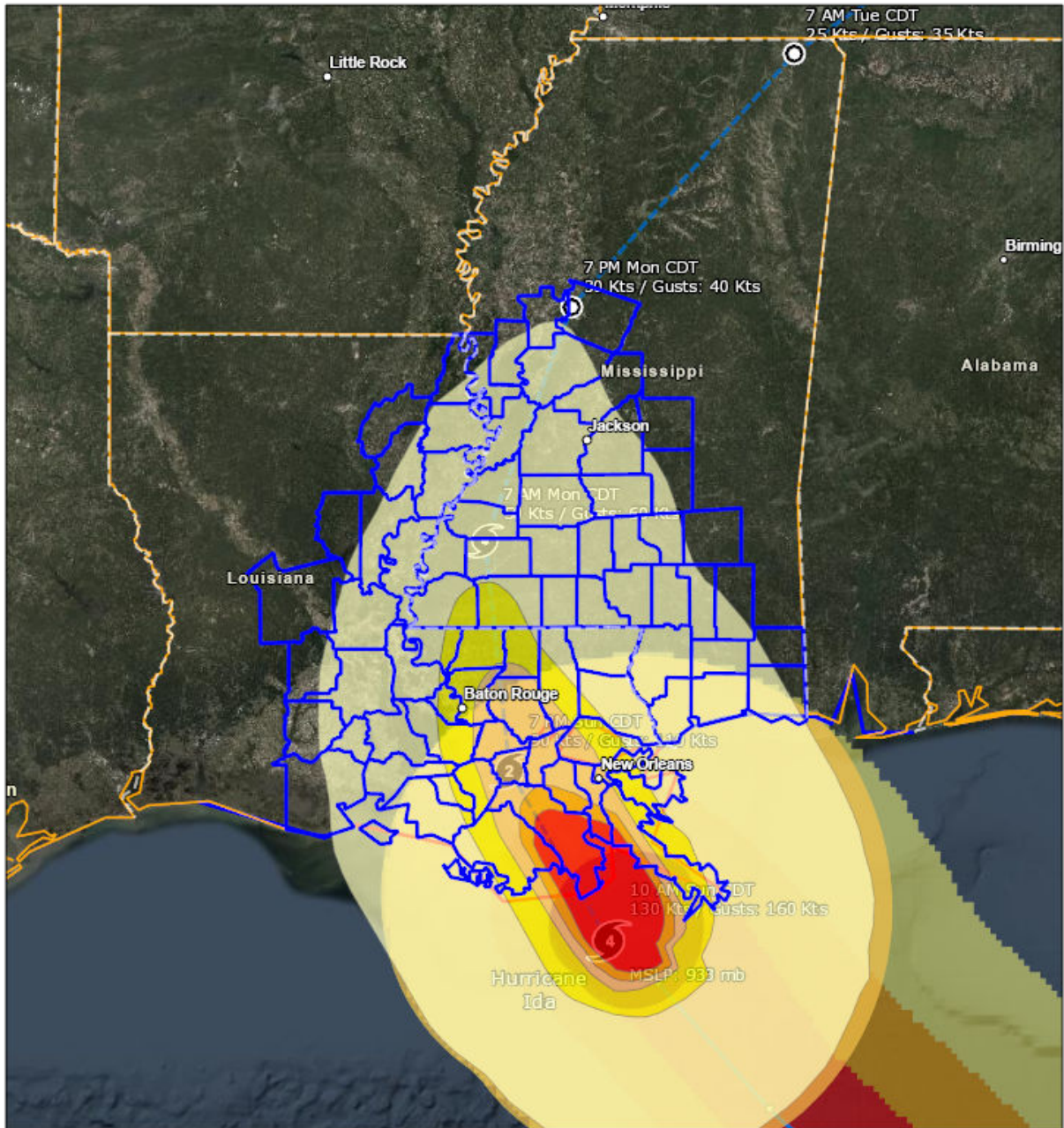
1. Extremely life-threatening storm surge inundation of 9 feet or greater above ground level is imminent somewhere within the area from Burns Point, Louisiana, to Ocean Springs, Mississippi. Overtopping of local levees outside of the Hurricane and Storm Damage Risk Reduction System is possible where local inundation values may be higher.
2. Catastrophic wind damage will occur where the core of Ida moves onshore along the southeast coast of Louisiana in the next few hours. Hurricane-force winds and damaging wind gusts are expected today within the Hurricane Warning in southeastern Louisiana, including metropolitan New Orleans.
3. Damaging winds, especially in gusts, will spread inland near the track of the center of Ida into southwestern Mississippi tonight and early Monday. These winds will likely lead to widespread tree damage and power outages.
4. Ida will continue to produce heavy rainfall today through Monday across the central Gulf Coast from southeast Louisiana, coastal Mississippi, and far southwestern Alabama, resulting in considerable to life-threatening flash and urban flooding and significant river flooding impacts. As Ida moves inland, significant flooding impacts are possible across portions of the Lower Mississippi, Tennessee Valley, Upper Ohio Valley, Central Appalachians and the Mid-Atlantic through Wednesday.



For more information go to hurricanes.gov







1:4,991,478

<ul style="list-style-type: none"> ▬ Counties State Boundaries Mission Model Swaths TS Cat 1 Cat 2 Cat 3 	<ul style="list-style-type: none"> Cat 4 Tropical Cyclone Observed Surface Wind Swath Observed (Best Track) Winds >= 34 knots (39 mph) Observed (Best Track) Winds >= 50 knots (58 mph) Observed (Best Track) Winds >= 64 knots (74 mph) — Observed (Best Track) Track Line ○ Observed (Best Track) Center Position
--	---

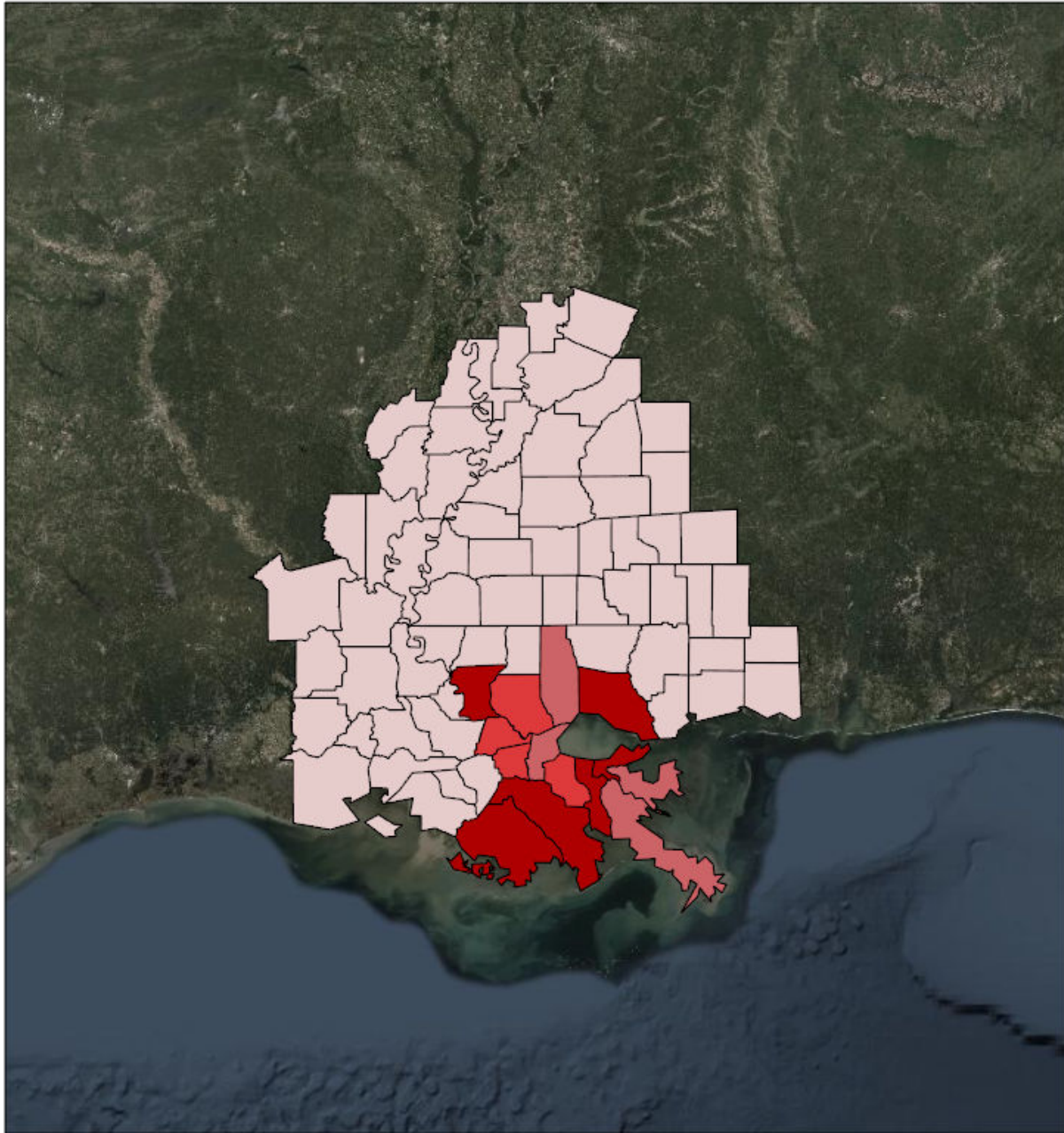
0 35 70 140 mi

0 55 110 220 km




Source: NOAA, Esri, NOAA/NOS/OCS nowCOAST, NOAA/NWS/NHC, NOAA/NWS/CPHC, Esri, HERE, Garmin, FAO, NOAA, USGS, EPA, Source: Esri, DigitalGlobe, GeoEye, Earthstar Geographics, CNES/Airbus DS, USDA, USGS, AeroGRID, IGN, and the GIS User Community

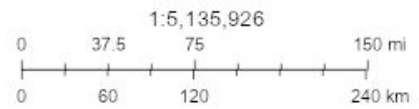
Created by SimSuite

Debris



Debris

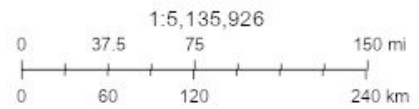
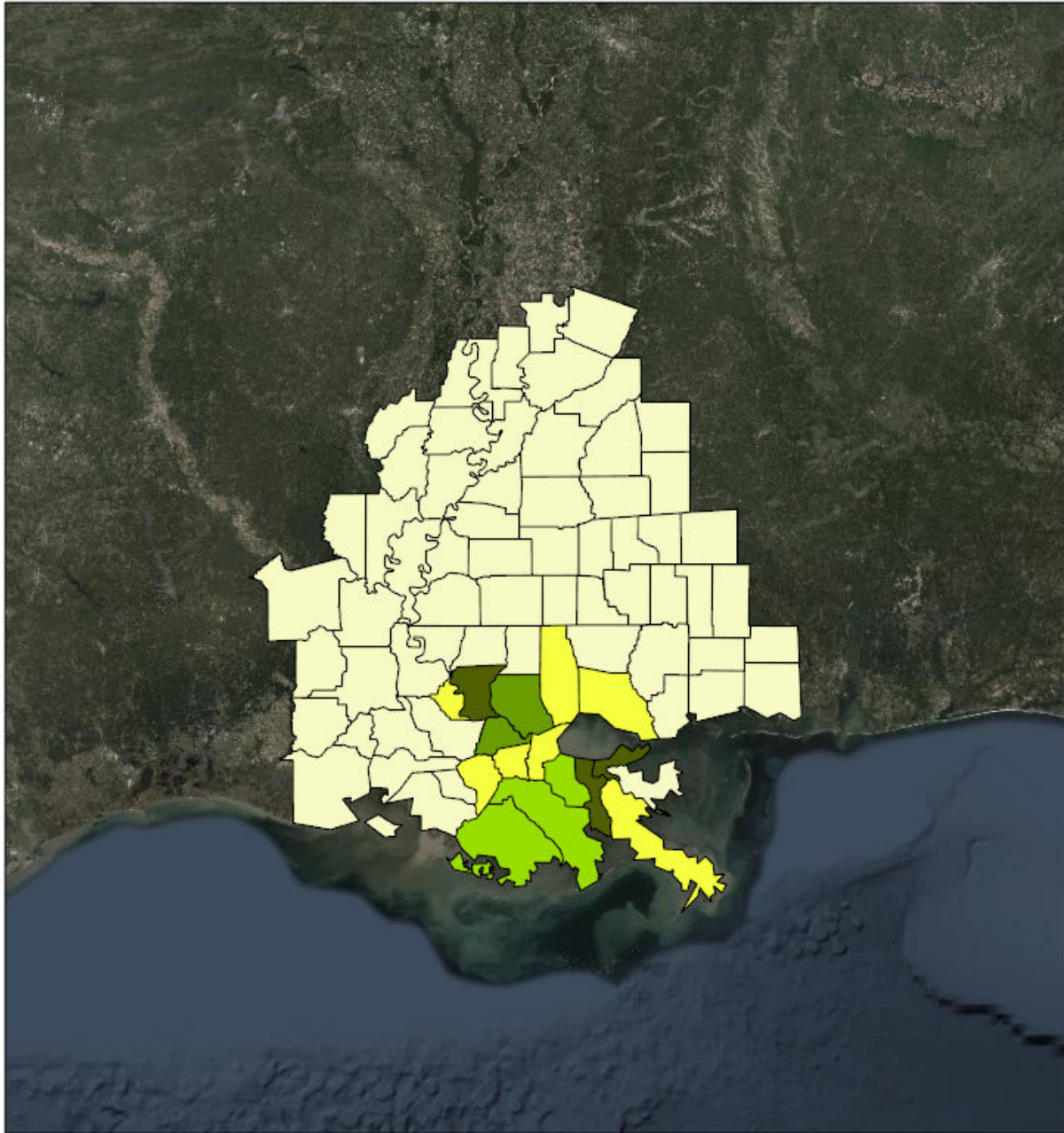
-  < 100,000 cubic yards
-  250,000 - 499,999 cubic yards
-  500,000 - 999,999 cubic yards



Source: Esri, DigitalGlobe, GeoEye, Earthstar Geographics, CNES/Airbus DS, USDA, USGS, AeroGRID, IGN, and the GIS User Community

Created by SimSuite

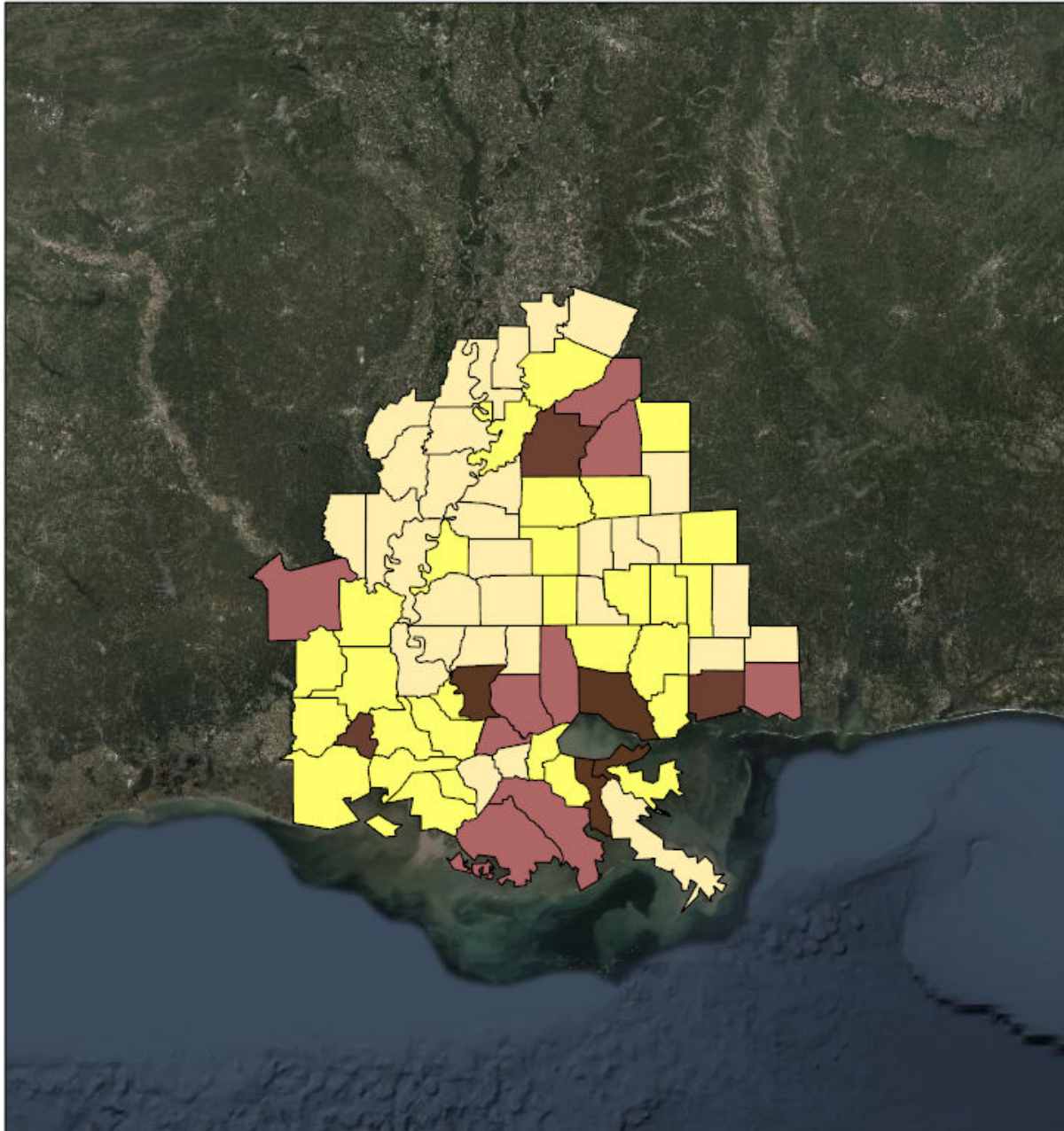
Est. Temp. Roofing






Source: Esri, DigitalGlobe, GeoEye, Earthstar Geographics, CNES/Airbus DS, USDA, USGS, AeroGRID, IGN, and the GIS User Community

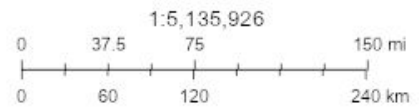
Created by SimSuite

Population



Population

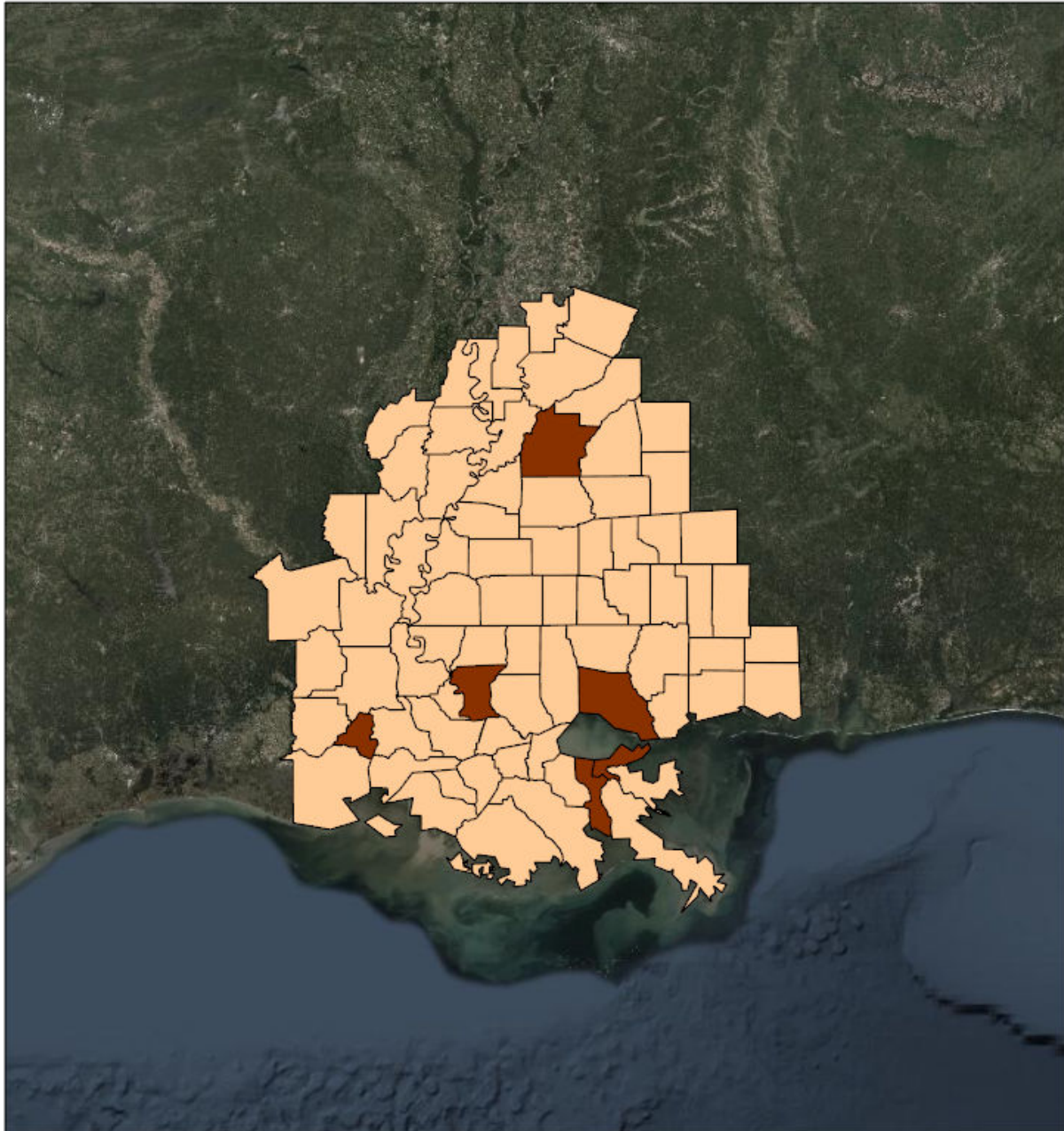
-  < 25,000 persons
-  25,000 - 99,000 persons
-  100,000 - 174,999 persons
-  175,000 - 249,000 persons



Source: Esri, DigitalGlobe, GeoEye, Earthstar Geographics, CNES/Airbus DS, USDA, USGS, AeroGRID, IGN, and the GIS User Community

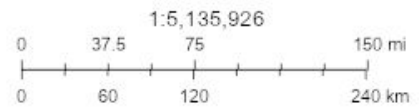
Created by SimSuite

Households



Households

- < 7,500 Households
- 15,000 - 24,999 Households
- 25,000 - 49,999 Households



Source: Esri, DigitalGlobe, GeoEye, Earthstar Geographics, CNES/Airbus DS, USDA, USGS, AeroGRID, IGN, and the GIS User Community

Created by SimSuite

Mission Summary



The mission models account for storm surge and wind damage only, but do not account for other related storm hazards that may affect the mission estimates.

Mission Summary	
Total Counties	76
Debris (cu. yd.)	24,429,657
Est. Temp. Roofing (units)	15,675
Act. Temp. Roofing (units)	5,173
Population	5,189,840
Households	1,867,657

Population Distribution	
Tropical Storm	2,469,159
Category 1	762,124
Category 2	956,933
Category 3	143,367
Category 4	192,403

LOUISIANA	Yds of Debris (24,397,170)	Est. Roof Units (15,595)	Act. Roof Units (5,146)	Population (3,521,606)	Households (1,260,292)
Acadia	0	0	0	64,233	22,841
Ascension	766,381	1,087	359	124,274	37,790
Assumption	93,029	161	53	24,326	8,736
Avoyelles	0	0	0	43,493	15,432
Catahoula	0	0	0	10,384	3,834
Concordia	0	0	0	20,789	7,613
East Baton Rouge	1,882,287	3,218	1,062	455,183	172,057
East Carroll	0	0	0	7,690	2,552
East Feliciana	38,064	90	30	20,133	7,022
Evangeline	0	0	0	35,225	12,829
Franklin	0	0	0	21,409	7,904
Iberia	5,923	14	5	74,654	26,778
Iberville	39,383	84	28	34,675	11,072
Jefferson	9,753,185	4,182	1,380	436,044	169,647
La Salle	0	0	0	15,517	5,468
Lafayette	0	0	0	249,487	87,027
Lafourche	3,447,580	577	190	102,036	35,486
Livingston	933,022	1,324	437	142,761	46,007
Madison	0	0	0	11,737	4,025
Orleans	1,085,582	1,942	641	378,952	142,158
Plaquemines	456,187	144	48	24,106	8,077
Pointe Coupee	1,747	4	1	22,931	9,082
Rapides	0	0	0	138,904	50,401
Richland	0	0	0	21,497	7,551
St. Bernard	268,122	91	30	42,016	13,221
St. Charles	713,979	596	197	55,762	18,557
St. Helena	73,374	64	21	11,008	4,333
St. James	512,149	222	73	22,785	7,717
St. John the Baptist	325,229	460	152	46,127	15,965
St. Landry	0	0	0	85,834	31,857
St. Martin	0	0	0	55,795	19,216
St. Mary	6,102	15	5	54,463	20,457
St. Tammany	1,419,941	100	33	259,212	87,521
Tangipahoa	260,703	477	157	133,414	45,135
Tensas	0	0	0	5,076	2,172
Terrebonne	2,264,332	620	205	116,998	40,091
Vermilion	0	0	0	61,784	21,889
Washington	0	0	0	48,152	18,113
West Baton Rouge	44,048	108	35	26,881	8,688
West Feliciana	6,822	17	5	15,859	3,971

MISSISSIPPI	Yds of Debris (32,487)	Est. Roof Units (79)	Act. Roof Units (26)	Population (1,668,234)	Households (607,365)
Adams	0	0	0	31,160	12,643
Amite	27,130	66	22	12,545	5,351
Claiborne	0	0	0	9,331	3,440
Copiah	0	0	0	29,484	10,708
Covington	0	0	0	20,137	7,430
Forrest	0	0	0	75,662	28,746
Franklin	0	0	0	8,081	3,211
George	0	0	0	23,759	7,982
Hancock	0	0	0	48,810	17,380
Harrison	0	0	0	205,027	71,476
Hinds	0	0	0	243,165	91,351
Holmes	0	0	0	18,437	6,926
Humphreys	0	0	0	8,556	3,373
Issaquena	0	0	0	1,325	472
Jackson	0	0	0	144,768	52,205
Jefferson	0	0	0	7,644	2,929
Jefferson Davis	0	0	0	11,776	4,977
Jones	0	0	0	69,444	25,247
Lamar	0	0	0	58,929	21,542
Lawrence	0	0	0	13,333	5,078
Lincoln	0	0	0	35,319	13,296
Madison	0	0	0	107,968	35,829
Marion	0	0	0	26,158	10,135
Pearl River	0	0	0	56,827	20,816
Perry	0	0	0	12,551	4,674
Pike	0	0	0	40,438	15,370
Rankin	0	0	0	150,867	52,836
Scott	0	0	0	29,480	10,248
Sharkey	0	0	0	4,786	1,834
Simpson	0	0	0	27,769	10,330
Smith	0	0	0	16,696	6,221
Stone	0	0	0	18,163	6,165
Walthall	0	0	0	14,801	5,888
Warren	0	0	0	48,277	18,941
Wilkinson	5,357	13	4	9,239	3,455
Yazoo	0	0	0	27,522	8,860

Critical Infrastructure

Summary			
Total Critical Facilities		3,507	
Power Requirements (kW)		117,971.1	
Range (kW)			
Communications	# FED Gen Req	Range (kW)	Req kW
AM Antennas (35)	1.8	35 - 75	96.3
Cellular Towers (135)	81.0	35 - 75	4,455.0
FM Antennas (83)	4.2	35 - 75	228.3
Education	# FED Gen Req	Range (kW)	Req kW
Private Schools (206)	0.0	200 - 300	0.0
Public Schools (649)	194.7	200 - 300	48,675.0
Colleges and Universities (71)	1.4	200 - 300	355.0
Emergency Services	# FED Gen Req	Range (kW)	Req kW
911 Call Centers (1)	0.1	15 - 35	2.5
Emergency Medical Service (285)	28.5	15 - 35	712.5
Fire Stations (401)	40.1	15 - 35	1,002.5
Service Providers (1)	0.0	0 - 0	0.0
Healthcare	# FED Gen Req	Range (kW)	Req kW
Nursing Homes (152)	22.8	35 - 100	1,539.0
Hospitals (81)	24.3	800 - 2000	34,020.0
Urgent Care Facilities (38)	7.6	200 - 300	1,900.0
Military	# FED Gen Req	Range (kW)	Req kW
Air National Guard (ANG) Sites (3)	0.0	15 - 35	0.0
Army National Guard (ARNG) Sites (20)	0.0	15 - 35	0.0
National Security Government Military Facilities (207)	0.0	15 - 35	0.0
Law Enforcement	# FED Gen Req	Range (kW)	Req kW
Prison Points (33)	6.6	400 - 600	3,300.0
Local Police (61)	6.1	15 - 35	152.5
State Police (8)	0.4	15 - 35	10.0
Correctional Facilities (0)	0.0	400 - 600	0.0
State and Local EOC	# FED Gen Req	Range (kW)	Req kW
Local Emergency Operations Centers (23)	4.6	15 - 40	126.5
State Emergency Operation Centers (EOCs) (1)	0.2	15 - 35	5.0

State Facilities	# FED Gen Req	Range (kW)	Req kW
Governors Mansion (1)	0.0	100 - 200	0.0
Major State Government Building (27)	2.7	100 - 200	405.0

Transportation	# FED Gen Req	Range (kW)	Req kW
Ports (671)	0.0	600 - 1200	0.0
Amtrak Stations (4)	0.0	100 - 300	0.0
Bus Stations (69)	0.0	100 - 300	0.0
Intermodal Terminal Facilities (38)	0.0	100 - 300	0.0
Railroad Stations (3)	0.0	100 - 300	0.0
Public-Use Airports (165)	19.8	40 - 100	1,386.0

Water	# FED Gen Req	Range (kW)	Req kW
Water Treatment Facilities (2)	0.8	800 - 2000	1,120.0
Wastewater Treatment Plants (33)	13.2	800 - 2000	18,480.0

COVID-19

#	County	Cases
1	Jefferson	65,340
2	East Baton Rouge	58,416
3	Orleans	43,361
4	St. Tammany	39,777
5	Lafayette	34,858
6	Harrison	28,793
7	Hinds	28,436
8	Livingston	22,291
9	Tangipahoa	20,978
10	Jackson	20,795
11	Ascension	19,952
12	Rankin	19,385
13	Rapides	18,539
14	Terrebonne	17,784
15	Lafourche	16,391
16	Madison	12,941
17	St. Landry	12,418
18	Forrest	11,911
19	Jones	11,761
20	Iberia	11,197
21	Acadia	9,346
22	Lamar	9,311
23	Vermilion	8,883
24	St. Charles	8,289
25	St. Mary	7,782
26	St. Martin	7,617
27	Pearl River	7,521
28	Washington	7,069
29	St. Bernard	6,351
30	Hancock	6,311
31	Avoyelles	6,247
32	Warren	5,870
33	St. John the Baptist	5,816
34	Iberville	5,446
35	Evangeline	5,044
36	Pike	4,797
37	Lincoln	4,731
38	East Feliciana	4,250
39	West Baton Rouge	4,130

40	Scott	4,086
41	Adams	3,947
42	George	3,904
43	Yazoo	3,883
44	Copiah	3,831
45	Simpson	3,825
46	Covington	3,759
47	Franklin	3,714
48	Marion	3,646
49	Richland	3,559
50	Plaquemines	3,558
51	Pointe Coupee	3,522
52	Assumption	3,336
53	Stone	3,135
54	St. James	3,041
55	Concordia	2,792
56	Holmes	2,368
57	LaSalle	2,329
58	Smith	2,240
59	Madison	1,903
60	Lawrence	1,852
61	Walthall	1,826
62	Perry	1,723
63	Amite	1,716
64	Catahoula	1,567
65	Jefferson Davis	1,511
66	West Feliciana	1,409
67	East Carroll	1,399
68	St. Helena	1,226
69	Claiborne	1,192
70	Humphreys	1,127
71	Franklin	1,029
72	Wilkinson	925
73	Jefferson	819
74	Sharkey	573
75	Tensas	434
76	Issaquena	184